

## BUILDING CRACK DETECTION USING ARTIFICIAL INTELLIGENCE AND MACHINE LEARNING APPROACH

**Chandan D S**

PG, Student

The Oxford College of Engineering,

Bommanahalli,

Bengaluru- 560068

[chandandsmca2025@gmail.com](mailto:chandandsmca2025@gmail.com)

**Sowmya J**

Assistant Professor

Dept. of MCA

The Oxford College of Engineering,

Bommanahalli, Bengaluru- 560068

[sowmyaj@theoxford.edu](mailto:sowmyaj@theoxford.edu)

### ABSTRACT

Surface cracks on the concrete structures are a key indicator of structural safety and degradation. Large cracks indicate that buildings are aging and we must find them fast before the bad damage can take place in order to maintain safety and security. Ordinary checks by individuals are time consuming, may be erroneous, and are subjective by nature and hence we require the use of machines to assist. The current study provides the framework to leverage AI and machine learning capabilities through the usage of special technology (CNN) in the process of the locating and classifying the cracks in the shortest time possible. We used a lot of images of building surfaces which we obtained ourselves to teach the model two types: cracked and not cracked. To improve the model, we took such measures as making all pictures even and including more data. The system monitors continuously and alert us immediately when it detects a crack. Tests

demonstrate that it works pretty well, being correct more than 97 percent of the times, and can be applied in numerous situations. For our system we have implemented a deep learning model based on the VGG16 architecture. VGG16 is which does very well in the area of image recognition.

**Keywords:** *Predicting cracks faults in the pre-existing structures, Brain-like neural network (CNN) and deep learning, real-time inspection.*

### INTRODUCTION

Traditionally, an inspection is mainly completed by professional inspectors on the spot, which is time-consuming and labor-intensive. The crashes are expressed in their preliminary damages. This type of observation and detection of such cracks may serve as an efficient method of eliminating the additional damage and making buildings safe. Methods to test cracks were quite labor intensive to test and time consuming and people had to be on

hand watching them. It is too much work in large territories or on localities that are scrutinized on a regular basis. The different things such as variation of light as well as nonuniform surfaces complicate the old methods. Superior technology in Artificial Intelligence, such as deep learning through machine reduces us to newer tools which require less input. Computers use networks.

With the continuous monitoring of surfaces with CNNs and using continuous surveillance systems, we can be looking on surfaces at all times. This is of the filler and warning speed up sealing of cracks. This paper develops a CNN-based tool to detect cracks in real-time by use of new data that we collected. Our aim is to create a means to monitor the health of buildings that is correct and cost- and energy-efficient.

## **LITERATURE SURVEY**

Further stability in crack verification of buildings is more intense, since it is significant to have safe buildings and the reduced maintenance price. In the primary stage, the people employed ancient approaches in image perception by perceiving the edges and drawing the boundary lines and was unable to use the varied resources of light on the images or the surfaces. To address these problems, people began to employ Artificial Intelligence (AI) and a Machine Learning (ML), i.e., deep

learning, which relies on obtaining the information and recognizing it. Detection of the building surfaces to whether they are cracked or not is general category that is transmitted through Convolutional Neural Networks (CNNs).

The literature indicates that CNN models outperform the conventional models particularly in cases where the models are trained using numerous labels. More advanced models such as ResNet, VGGNet and the U-Net have contributed to the quality of crack detection as the detection picks up more details at a longer distance and places a mark on a pixel level. There has also been the proposal of basic CNN and even the newer application of old learning to be applied on less powerful equipment on the very rapid manner

## **EXISTING WORK**

Considering the various problems faced by the current traditional inspection methods. Practical measures imply looking by specialists, so it requires much time, numerous efforts, and it may include errors. Here not able to detect same results in every case particularly in case one is interested in large constructions or performing numerous checks. Simple crack spotting using edge spot, mark sets and stepped shapes were also employed on early auto systems.

Such methods were somewhat auto assisted and quite receptive to external factors such as light, the sensation the face creates and also dark spots. This tended to direct to the wrong locations or incorrect hits. The current systems work on AI and ML primarily CNN in order to overcome these tough sections. These models extract space and sense things without a picture themselves, and these are improved to perfectly over the ancient methods.

Such models as VGGNet, ResNet, and U-Net are commonly applied now as crack find and split. Moreover, object detection methods (YOLO and Faster R-CNN) allow introducing cracks on convenient to use. With these preparations in place, much of the existing AI-based systems still require large pre-prepared data sets and significant compute assistance, so their high-scale adaptation and operation in places with limited resources is challenging. This leaves an opening to a superior system that can be functional with personal information and installed in installed in an easy way.

## **PROPOSED SYSTEM**

The new solution is based on AI that identifies cracks in buildings solving the problem of the old solution and other circuitous measures. Underneath, is a Convolutional Neural Network (CNN), that excels at locating the type of images and extracting vital

information. To respond effectively in other circumstances, such as variations in light, appearances, and building materials. The process consists of four steps that include obtaining the information, preparing the information, training of the model, and performing the real-time test over the system. One is that it can capture good images of building sides both cracked and non-cracked. These images are then reduced, to the same size and quality elevated to improve the data and model. Then the CNN is trained to classify images as Crack or Non-Crack.

It becomes even better when it gets special modifications such as batch normalization, dropout and intelligent learning rates to be correct without becoming too clever. Following this, the model connects to a live-check module, which gives it the ability to examine pictures immediately via connected cameras. This study uses a Single-shot Multi box Detector (SSD), which has additional parameters in the form of sliding windows. Combining CNN sorting with live checkups, the new system is an intelligent, inexpensive, and proactive solution that allows one to maintain buildings in good shape by reducing the manual aspects of the task and boosting safety and confidence in the process.

## METHODOLOGY

The strategy of locating the cracks has four main stages getting data, preparing data, training a model, and monitoring in real-time. We begin with images of the sides of buildings. They may show areas of cracks and smoothness with the latter having the various lighting and appearance. The preparation of data is carried out by normalizing the dimension and establishing of norms and TRANS. This makes data more efficient and model resistant to any fluctuations within its vicinity or noise.

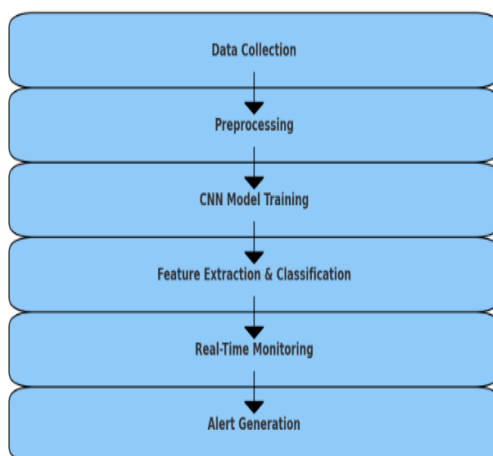


Fig 1. Block diagram of Crack Detection

The CNN learns the data based on the images in the utilization of filters and pools and embeds and consolidates all the information as a sequence. With labeled data we generalize this model and resort to the tricks of batch norms and drop-out to avoid learning the wrong things too well using only small numbers of data points.

Lives shots are fed into this smart CNN, and in a matter of minutes shows any discontinuities. When it shows signs of problems it raises alerts that solutions to the problems have to be found promptly. By doing so verify that the locating of the breaks is accurate and has the ability to scale along with being operational at all times when testing the integrity of the structure. We have no doubt on the images of the cracked and smooth parts of the wall so that a satisfactory data set is created. These first steps will include resizing the pic, turning it gray, turning it normal, and adding some more information to make it fit better and functional. The CNN utilizes network layers, spots, pools as well as joins in the retrieval of area information and the placement in its appropriate location. We improve the model by feeding is with labeled examples, using such tools as Adam and early stopping. In use, a real-time watch monitor continuously updates new information to the trained model and alerts where cracks will be discovered. We can at first change its size, invest it with a of gray color, position it in an advantageous place and feed it with a measure of information to ensure its placement and functionality. The CNN proposal of the layers, spots and pools are targeted to filter the space information and group it accordingly. Using such tools as Adam, we adjust the model based on the named data hoping that we will perform well with the early stopping.

## EXPERIMENTAL RESULTS

The CNN-based system to detect cracks was proved in practice with the uploaded images and the live camera stream. The model performed well in classification and represented a use case of real time classification of cracked and non-cracked surfaces with a great degree of accuracy. Correctly classified as Non-Crack was determined with a confidence rate of 97.24% as represented in the experimental interface. Images with clear surface cracks were classified as Crack with 97.75 percent and 99.21 percent probability of prediction success during both the static and live monitoring trials respectively. These findings showed the system could take a variety of conditions of input and would give the same prediction with a small delay. The option to use real-time camera processing also emphasizes the constant monitoring. On the whole, prove the fact that the system effectively detects cracks, achieving high efficiency, precision, and automatization, which helps to carry out proactive structural health monitoring, diminishing the role of manual inspection, and increasing the safety and durability of the infrastructure in different building settings over time.

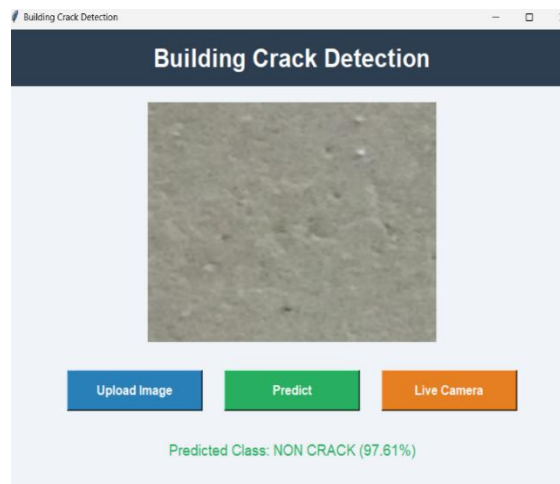


Fig 2. Detection of Non-Crack

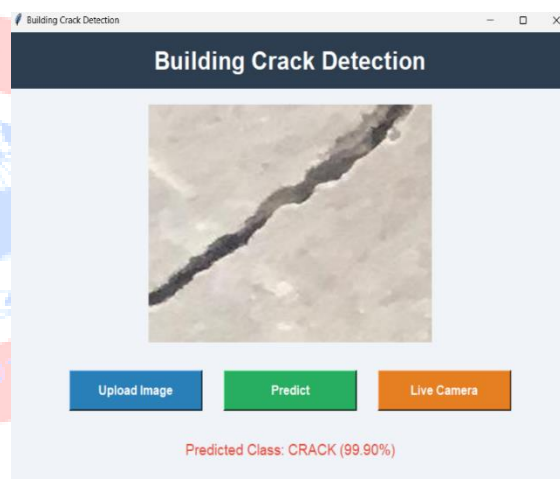


Fig 3. Detection of Crack

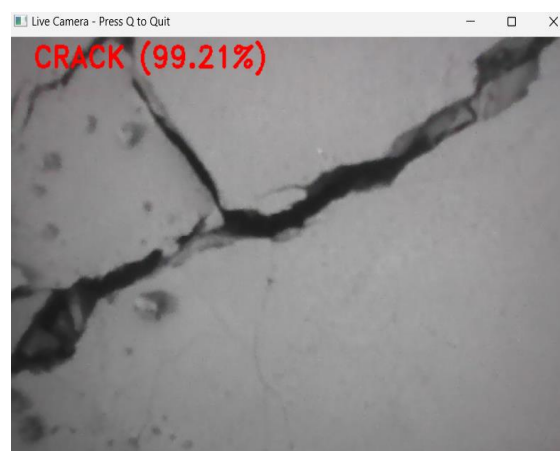


Fig 4. Detection of Crack by live monitoring

## CONCLUSION

The buildings must be sturdy to maintain the safety of people and durability. Identifying cracks in advance is important to prevent major cracks. The conventional techniques to examine the presence of a crack require much work, much time and may be erroneous since humans are required to accomplish the task. when we have to inspect large or numerous areas frequently. This paper applied to AI to search better cracks. It employed a form of AI known as CNNs and monitored what was going on in real time. The system had data of its own to train the CNN on how it recognizes the presence of cracks on pictures. Such actions as data normalization and the increase in the amount of data ensured model functionality and good performance. The system is extremely correct in most cases - over 97 per cent correct, which places it in a position to be trusted in most environments. It can also alert us to some problem in real-time which is beneficial to monitor building health constantly. The positives in this plan are numerous: There is a reduced requirement of people to inspect things, The applicable in numerous locations and it saves on money in the long run. It also functions with small devices on the spot, which means that we can utilize it wherever it is necessary.

## REFERENCES

- [1] Li, Wu, and Lu discussed deep learning as the means of crack detection. The (online) publication is in *Automation in Construction* 133 (2022) 103994.
- [2] S Cha, W Choi, O Buyukozturk examined the ability to detect crack damage through deep learning and neural networks. It is published in *Computer-Aided Civil and Infrastructure Engineering* No. 32, issue 5, pages 361-378, 2021.
- [3] X. Zhang, H. Yang and J. Hu discuss how to detect cracks in concrete in real-time using YOLO and deep learning models. It is in *Sensors*, 22, 2745, 2022.
- [4] K. Dorafshan, R. Thomas, and M. Maguire, compared neural networks, with edge detectors in detecting cracks in images of concrete. In their paper, the authors divide their research into *Construction and Building Materials*, which was published on pages 1031-1045, volume 186, 2020.
- [5] A. Sharma and P. Gupta discussed AI in the inspection of infrastructure. CNN and on-site analysis was employed by them in crack detection. Possibly in *Journal of Civil Engineering and Management*, volume 29, issue 3, in pages 220-232, year 2023.
- [6] B. Zhang, Y. Lei, and S. Li developed a light CNN that can be used to run a fast building crack detection. It is in the *IEEE Access*, 10, 76532 76544, 2022.